



Swiss National Park



graubünden a world of its own.



Protect

The Swiss National Park is a strictly protected wilderness where flora and fauna can develop freely and natural processes are allowed to run their course unhindered.

Thanks to the vision of far-sighted pioneers Switzerland's first national park, the oldest in the Alps, was founded nearly 100 years ago. According to the International Union for the Conservation of Nature (IUCN) the Swiss National Park belongs to the highest category – the “Champions League” – of strict nature reserves. Such a high status carries obligations. Within the Park it is not permitted to leave the marked paths; it is prohibited to pick flowers, mow meadows, kill animals or cut down trees. Nature is left to her own devices, without hindrance or human intervention.

It is not just a question of protection of species; the entire habitat, with all its natural dynamic processes, is strictly protected – fallen trees, avalanches and mudslides also come into this category. The comprehensive and consistent philosophy that has been a crucial element of the SNP since its foundation on 1st August 1914 also guarantees its future development.



Protection regulations

The SNP is one of the best protected areas in the Alps. Visitors are able to witness the dynamic processes that lend this landscape its unique character.

Park wardens are present to enforce the maintenance of the Park regulations and it is their duty to report any contraventions.
Extract from the National Park regulations:

- ▶ It is strictly forbidden to leave the marked paths
- ▶ It is forbidden to throw away, leave, or bury litter and to light fires
- ▶ No natural object may be picked or removed: animals, plants, stones, etc.
- ▶ Dogs are not allowed in the Park, not even on a lead
- ▶ No winter sports (skiing or snowshoeing), cycling or flying of any sort are permitted
- ▶ Overnight stays are strictly forbidden, including in parked cars alongside the main Pass dal Fuorn (Ofenpass) road
- ▶ Nature must be left undisturbed: it is not allowed to impede or alter the course of Nature
- ▶ Bathing in lakes, pools, streams and rivers is not permitted



Research

How does Nature develop without human intervention? Research projects and long-term observation programmes allow scientists to understand complex processes more clearly.

Scientists from various research institutes use this unique open-air laboratory to gain further knowledge of the development of Alpine species and habitats. Minimal human disturbance and the many years of research carried out by earlier generations of scientists offer ideal conditions for a variety of research activities.

The SNP has a unique series of data that have been collected over a considerable period, making it a highly attractive research site. The first long-term observation areas were set up in 1917, since when investigations have been

carried out and documented on a regular basis. SNP field researchers can be easily recognised by their coloured armbands and are always glad to give information about their activities.



Untouched nature

A glance skywards, sharp ears and a sensitive nose: if you remain alert whilst walking in the National Park you will surely enjoy fascinating experiences.

If you want to admire the myriad colours of the alpine flora, we recommend a visit during the months of June and July. This is also the best time to observe young animals up to their antics. For walks at higher altitudes, such as the Macun lake plateau or Fuorcla Val Sassa, it is best to come in July or August.

The second half of September sees the spectacular rutting season of the red deer. During October the larch forests of the Engadine turn to dazzling gold. Come winter the National Park is closed, allowing the animals to spend the hardest months of the year in tranquillity, with no disturbance.



Facts & Figures

| |
|--|
| Aims: protect, research, inform |
| Area: 170.3 km ² |
| Established: 1st August 1914 |
| Municipalities: Zerne, Scuol, S-chanf, Val Müstair, Lavin |
| Legal status: foundation governed by public law |
| Altitude: 1400 – 3173 m above sea level (Piz Pisoc) |
| Structure: 28 % forest, 21 % alpine meadows, 51 % rock/scree |
| Bedrock: 80 % dolomite and limestone |
| Mammals: 30 species |
| Birds: 100 species, of which 60 nest in the Park |
| Invertebrates: 5000 species |
| Higher plants: 650 species |
| Marked paths: 21 routes, altogether 80 km |
| Visitors per year: approximately 150,000 |



Inform

Excursions in the National Park offer a fascinating experience amidst a truly natural landscape. It is well worth visiting the National Park Centre before setting off.

Walking in an untouched natural environment, observing marmots close to, seeing edelweiss growing alongside the path, looking out for a sighting of a bearded vulture, chatting with a Park warden: these are unforgettable experiences.

The SNP has put together a vast amount of information with the aim of giving visitors a clear idea of how Nature interconnects; we hope this will encourage visitors to join us in protecting our natural environment.

Guided excursions, nature trails, teacher training courses, activities for children and youngsters,

lectures, exhibitions, digital walking guides, and various publications: all these are elements of the SNP's environmental awareness programme. The new National Park Centre in Zerne offers a vast array of interactive, hands-on displays and activities, making it an ideal place for young and old to visit before or after a walk in the Park.



Looking to the future

In 2014 the Swiss National Park will be celebrating its 100th jubilee. Conservation and continuous development are its aims for the future.

The SNP is still the only national park in Switzerland, and the third smallest in the Alps. Both the SNP and Switzerland have some catching up to do.

As of 2010 the SNP and the Val Müstair Biosphere together form a UNESCO Biosphere Reserve. There are, however, a few improvements that have to be made in the next few years before the area is officially recognised. In collaboration with partners from Tirol (A), South Tirol and Lombardy (I) and the southern part of the canton of Grisons, the SNP is now part of a pilot region within ECONNECT – an Alpine project where ecological

connectivity is the main objective. Only by working closely together with other protected areas will it be possible to ensure the presence of sufficiently large natural spaces for future generations. Within the network of Swiss and Alpine protected areas the SNP is fully committed to putting its vast know-how to good use, nationally and internationally, in striving to maintain an intact environment.

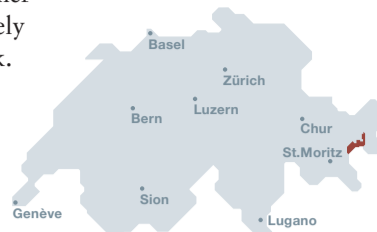


A visit to the National Park

National parks are prime examples of extensive nature protection. Providing information for the numerous visitors to the Park is an essential part of our task. We aim to offer information to people of all ages and in doing so provide all nature lovers with easy access to the particularities of this wonderful Alpine nature reserve.

Besides exhibitions, guided walks and events, numerous publications offer an insight into the immensely rich diversity of nature in the Swiss National Park.

Careful preparation prior to visiting the National Park greatly assists in making such a visit a memorable and fascinating experience.



Means of access

by train

- through the Rhaetian railway from Landquart with the Vereina tunnel to the Lower Engadine
- with the Rhaetian railway from Chur via Samedan to the Upper Engadine

Most excursion departure points can be reached by public transport. It is therefore possible to set out from and return to different points.

by bus

- Davos–Flüela Pass–Zernez
- (Bolzano–Meran–)Mals–Val Müstair–Pass dal Fuorn–Zernez
- Scuol–S-charl (Bear exhibition)
- S-chanf–Prasiras (Trupchun)
- Livigno–Zernez

Along the main Pass dal Fuorn (Ofenpass) road, which runs through the Park, parking is limited to the official marked and numbered parking areas. We therefore strongly recommend the use of public transport. Bus stops: parking areas 1, 3, 4, 6, 8, 10, Punt dal Gall. Also Prasiras (Val Trupchun) and Val Mingier.

The National Park Centre, Zernez

The National Park Centre consists of the aristocratic Planta-Wildenberg castle (administrative centre), an auditorium in the former castle stable building, and the modern visitor centre.

Before setting off on an excursion in the Park we recommend a visit to the new visitor centre. The permanent exhibition, with its interactive, hands-on, displays takes you on a stimulating journey of discovery. Themed exhibits provide food for thought, prompting visitors to look further afield, raising questions for discussion. Scientific facts, philosophical questions and mystical elements intermingle.

Staff on the information desk provide competent assistance and up to date information on walks and guided excursions, and on the state of the paths. Zernez Tourist Information is also now situated in the visitor centre.



National Park Events

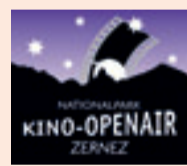
Current events
To find out about current events please go to "News and Events" on our website: www.nationalpark.ch

Naturama

Mid-July to mid-October, Wednesday evening, 8.30 pm, in the auditorium in the castle stable building. A series of 8 natural history lectures covering a wide range of subjects. (Lectures are usually in German.) Entrance fee: adults CHF 7.–, children CHF 3.–

National Park open-air cinema

Open-air cinema brings nature and culture together during the last week of July, in the atmospheric surroundings of the courtyard of the Planta-Wildenberg castle, Zernez.



A detailed programme is available from the visitor centre, www.nationalpark.ch. (Lectures are usually in German.)

The new visitor centre

Designed by the Grisons architect Valerio Olgiati, the building's clear, clean-cut lines and the unusual concept of its interior are captivating. Within the four exhibition rooms visitors experience the National Park from all angles. In room 1 visitors are plunged into the world of the Park. Close-up and spectacular images, filmed by Andreas Moser and his Network Nature team, are displayed on three vast screens.

How do landscapes take shape? In room 2 we are made aware of the never-ending dynamic of natural processes. And what impact does mankind have on nature? Room 3 is devoted to this multifaceted relationship. Every pioneering effort begins with a vision; to enable us to understand the present, in room 4 we look back at the past. Venture into the future! You too could become a pioneer.



Also available in the visitor centre:

- audio guide in 5 languages
- discovery trail for children
- seasonal, alternating exhibitions
- multimedia presence of partner organizations
- laser relief model
- text messaging service (SMS)
- digital information stands
- shop offering a wide range of books, clothing and souvenirs
- field glasses and digital walking guides available for hire
- organization and reservation of guided walks in the Swiss National Park

INFORMATION
Swiss National Park
Visitor Centre
CH-7530 Zernez
tel. +41(0)81 851 41 41
fax +41(0)81 851 41 12
Internet: www.nationalpark.ch
mail-to: info@nationalpark.ch

OPENING TIMES
Summer:
1st June to 31st October
Daily (incl. Sundays)
8.30 am to 6 pm

Winter:
Monday to Friday,
9 to 12 am, 2 to 5 pm
In the main winter season
Monday to Saturday
9 am to 5 pm,
on Sunday 2 to 5 pm

ADMISSION
Adults CHF 7.–
Children (6 to 16) CHF 3.–
(Children under 6: free)
Groups (10 or more)
per person CHF 6.–
Guided tours are available
on request; price CHF 150.–
excluding entrance fee

WALKING GUIDES
Combi-pack map and guide: map with
texts in 5 languages, scale 1:50,000,
showing all routes, together with a
handy A6 format 160-page guide to
walks, available in d/t/f/e. CHF 20.–



These and many other articles
are obtainable from the visitor centre
in Zernez. For information and
orders via internet:
www.nationalpark.ch

Out and about: what's on offer

Guided walks

- **For individuals and families:** from end June to mid-October guided walks take place on Tuesdays (via Margnet to one of the finest viewpoints in the National Park) and Thursdays (Val Trupchun with its wide variety of game). Reservation essential, at the visitor centre.
Price (per person): adults CHF 25.–, children CHF 10.–, families CHF 50.–

- **Fascination Nature:** educational nature excursions for children and families. Wednesday morning, throughout July / August. Duration: 3.5 hours. Price: unaccompanied children (aged 9 or over) CHF 10.–, families CHF 30.–

- **Private day-long guided walks:**
Price: CHF 350.–

- **Special day-long educational excursions:**
Price: CHF 350.–

Bookings: tel. +41(0)81 851 41 41
Prices subject to change

Nature Trail

Alongside the nature trail – in the region of Il Fuorn (see map) – pictures and texts offer a variety of information about the ecology of the National Park. There are special information boards for youngsters. It takes around 4 hours to walk the trail, which begins by the Hotel Il Fuorn. To accompany you along the trail a brochure is available in 5 languages. Price CHF 9.–.

Digital guide to walks

High-tech communication whilst out and about: a hand-held computer provides you with all sorts of information relevant to where you are at the time, or about other topics. Available for hire from the information desk at the visitor centre.

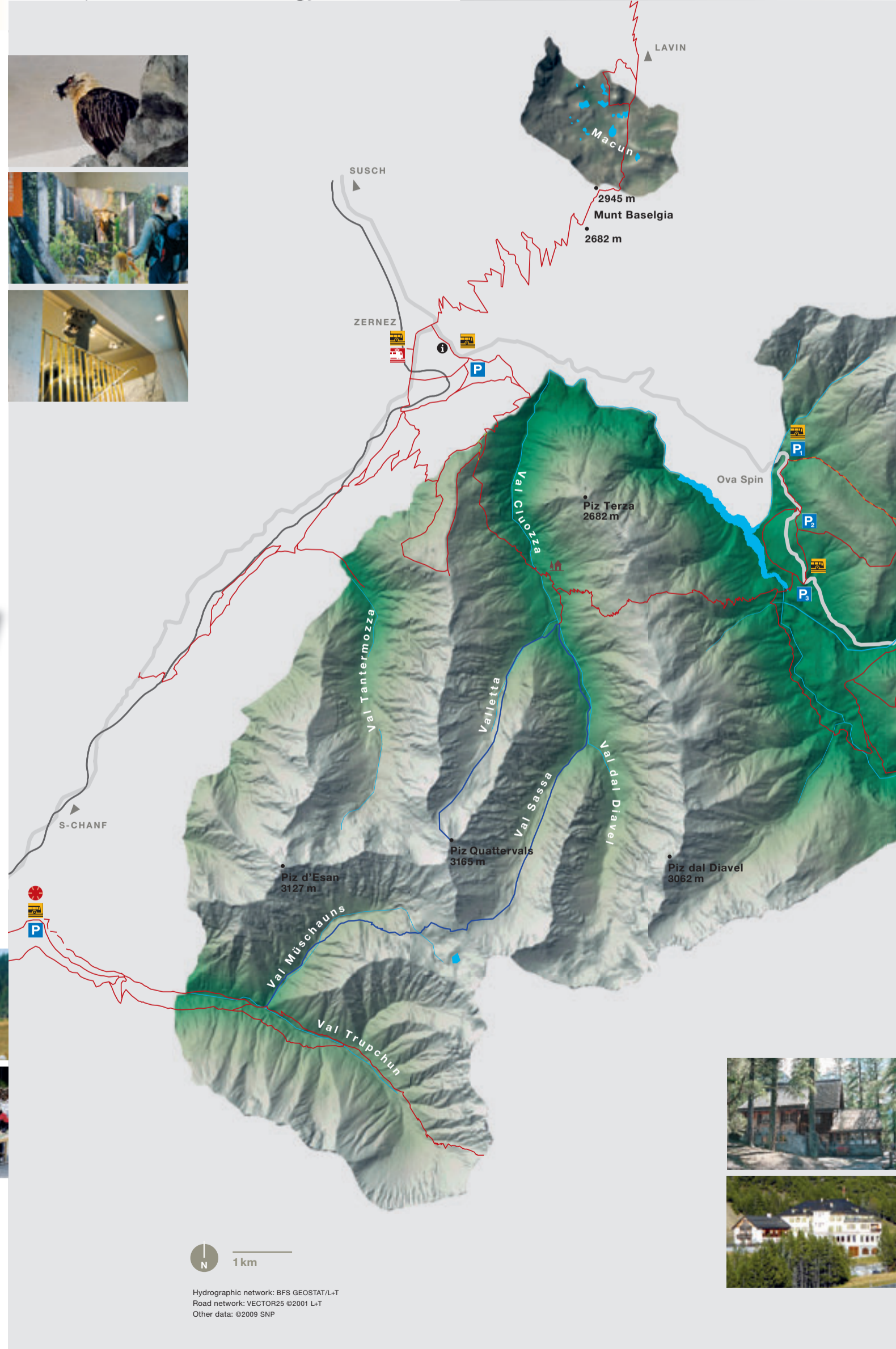
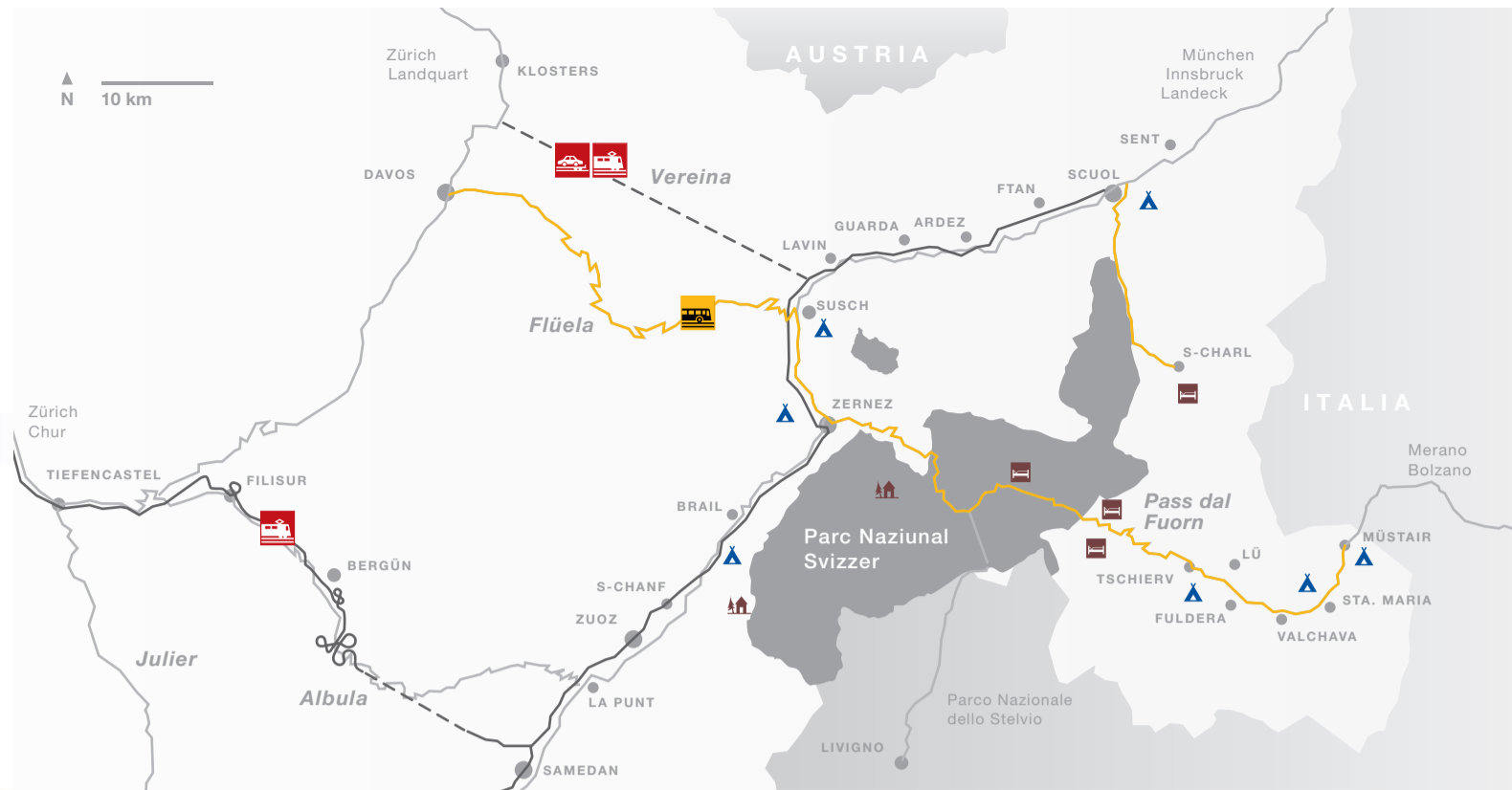
Champlönch children's trail

Between P1 and Il Fuorn there is a virtual discovery trail for children and families. At 10 different points along the way a booklet and electronic walking guide point out fascinating insights and provide information. There's more to see than meets the eye! The booklet and electronic guide are available at the National Park Centre.



INFOMOBIL

From mid-July to mid-October the National Park's mobile information centre is stationed on the main Pass dal Fuorn (Ofenpass) road or in the Trupchun valley (Val Trupchun). It houses a small exhibition, including a relief model of the park, and a competent guide is on hand to answer enquiries. Souvenirs on sale.



Excursion Tips

The Swiss National Park lies in the midst of the Alps. Sudden changes in weather, or a sharp drop in temperature can occur at any time. It is advisable to be well prepared and equipped. Walking shoes with good soles are essential, as well as suitable protection against sun, wind and rain. Apart from the Chamanna Cluozza and the Hotel Il Fuorn there is no possibility of refreshment within the Park. Remember that it is not permitted to light a fire anywhere in the Park or in the parking areas. Please respect the protection measures.

Path markers

- white-red-white: mountain paths
Equipment: weatherproof clothing, sturdy walking shoes with good, firm-gripping soles.
- white-blue-white: alpine routes
Steeper, more rugged paths; some mountaineering. Alpine equipment required.

Entrances to the Park are clearly signposted. Park regulations are also displayed there, as well as on the front side of this brochure.

The map shown here is for guidance only. To ensure your safety when walking in the National Park we recommend the official map of all marked routes, and the accompanying guide that gives detailed descriptions.

Bear trail, Scuol

Discover a host of information about bears whilst walking along the bear trail. Children and adults will be surprised to learn certain facts at 9 interactive points, which also give practical tips on how to behave within bear territory. The adventure lasts around 2 hours.

Bear exhibition and Schmelzra mining museum, S-charl

A comprehensive exhibition gives a realistic insight into the history, way of life and biology of the brown bear and deals with its return to the region. Ideal for children. In the same building there is an exhibition of the historical Val S-charl lead and silver mines. It is also possible to visit the former mining galleries. Information available from Scuol Tourism, tel. +41 (0)81 861 22 22

OPENING TIMES
Daily, mid-June to mid-October, 2 to 5 pm.
Closed on Saturday and Monday.
ENTRANCE FEE
Adults CHF 5.–, children CHF 3.–,
groups of 10 or more, per person CHF 4.–



DUPLIX DESIGN Basel

- PostBus stop
- Railway station
- Parking
- Meeting point for guided walks
- Nature trail
- Champlönch children's trail
- Bear trail

Accommodation

Finding accommodation during peak season may be difficult. We recommend booking early. Within the National Park there are two possibilities:

Chamanna Cluozza

Lying in the heart of the National Park this log cabin offers dormitory accommodation as found in Alpine Club huts. Open from end of June to beginning of October. It can be reached on foot, from Zernez, in approx. 3 hours. Alongside the cabin a small exhibition, to which entrance is free, gives general information about the National Park.

Hotel Il Fuorn

20 minutes away from Zernez, by postal bus or car, on the Pass dal Fuorn (Ofenpass) road.

Official Camping Sites

In Cinoos-chel, Zernez, Susch, Scuol, Tschier, Sta. Maria and Müstair. Elsewhere, and within the National Park, camping is forbidden. Note: this also applies to the parking areas alongside the main Pass dal Fuorn (Ofenpass) road.

RESERVATIONS

Chamanna Cluozza
tel. +41(0)81 856 12 35
www.nationalpark.ch, cluozza@nationalpark.ch

Hotel Il Fuorn:
tel. +41(0)81 856 12 26
www.ilfuorn.ch, info@ilfuorn.ch

Tourist information:

The following tourist information offices will gladly provide information about accommodation available in the region surrounding the National Park:
Zernez:
tel. +41(0)81 856 13 00
S-chanf:
tel. +41(0)81 854 22 55
Scuol/S-charl:
tel. +41(0)81 861 22 22
Val Müstair:
tel. +41(0)81 858 58 58
Zuoz:
tel. +41(0)81 854 15 10

Websites:
www.engadin.stmoritz.ch
www.scuol.ch
www.laregina.ch
www.munsterstal.ch
www.engadin-stari.ch